

FUGRO

Fugro GB Marine Limited
Trafalgar Wharf, Unit 16
Hamilton Road
Portchester
PO6 4PX
United Kingdom
T +44 (0)2392 205 510
www.fugro.com

NOTICE OF MARINE OPERATIONS: UPDATE**South East**

Works are expected to be undertaken on or around 25 February 2021 for the deployment of the Rye Bay wave buoy. Licence position as below:

Station	Latitude	Longitude
Rye Bay	50° 51.0800' N	00° 47.4300' E

With reference to the Rye Bay wave monitoring buoy (Figure 1), part of the Regional Coastal Monitoring Wave Buoy Network, Fugro kindly requests mariners:

- Give 200 m minimum clearance from the buoy;
- Refrain from deploying any fishing gear in the vicinity to reduce the danger of entanglement and equipment loss;
- Do not moor to any part of the deployed mooring or buoy.

The buoy is moored using a rotational, and therefore tidally influenced mooring design, with two 15 m rubber bungees close to the surface, linked by one small float and one large surface marker buoy complete with lantern (Figure 2). Mariners are requested not to pass within 200 m of the buoy, to avoid the danger of vessel entanglement or mooring damage.

The wave buoy is 0.9 m in diameter and is painted yellow. The buoy has a yellow flashing LED light on top of a 2 m long HF aerial transmitter (flashing 5 times every 20 seconds). In addition, the buoy is equipped with radar reflectors. The words NO MOORING and Channel Coastal Observatory are displayed on the buoy.

If you have any questions or comments, please contact Fugro's Coastal Oceanography department on:

By email: coastal.oceanography@fugro.com , or by phone: 02392 205 510

In emergencies please contact Fugro's Coastal Oceanography department on:

By email: fugroemumetocan@gmail.com , or by phone: 07810 697 357

Please forward on to any relevant parties.

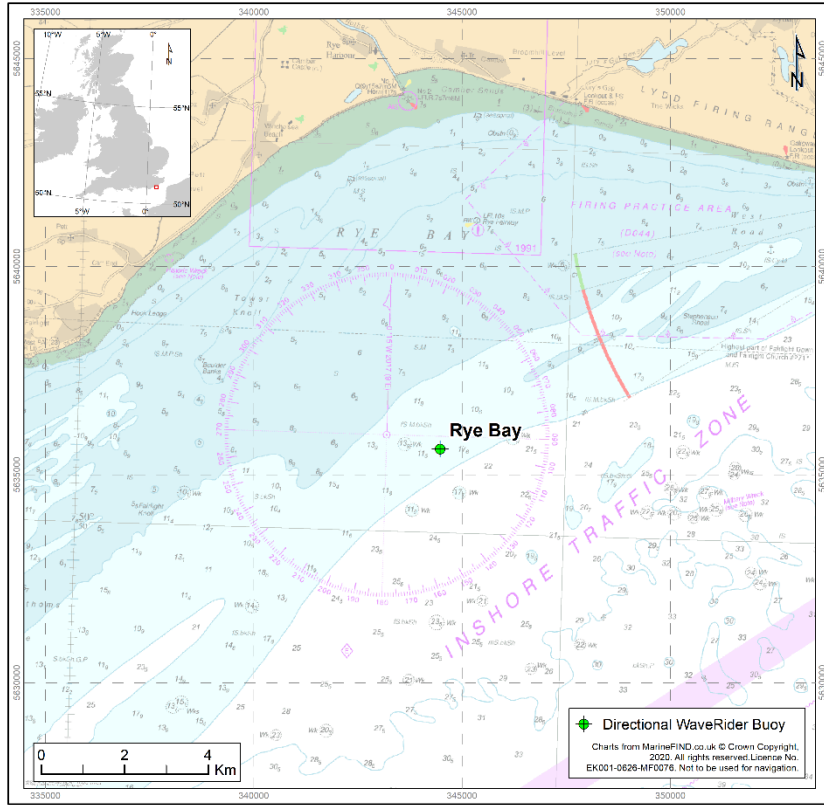


Figure 1: Rye Bay Wave Buoy

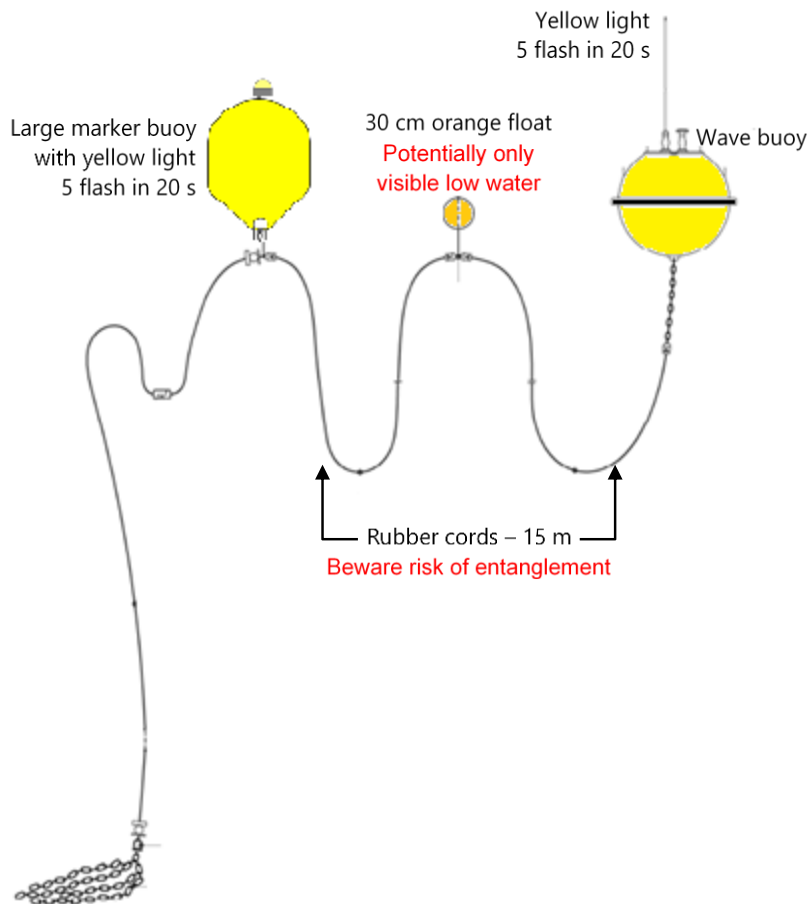


Figure 2: Mooring Design